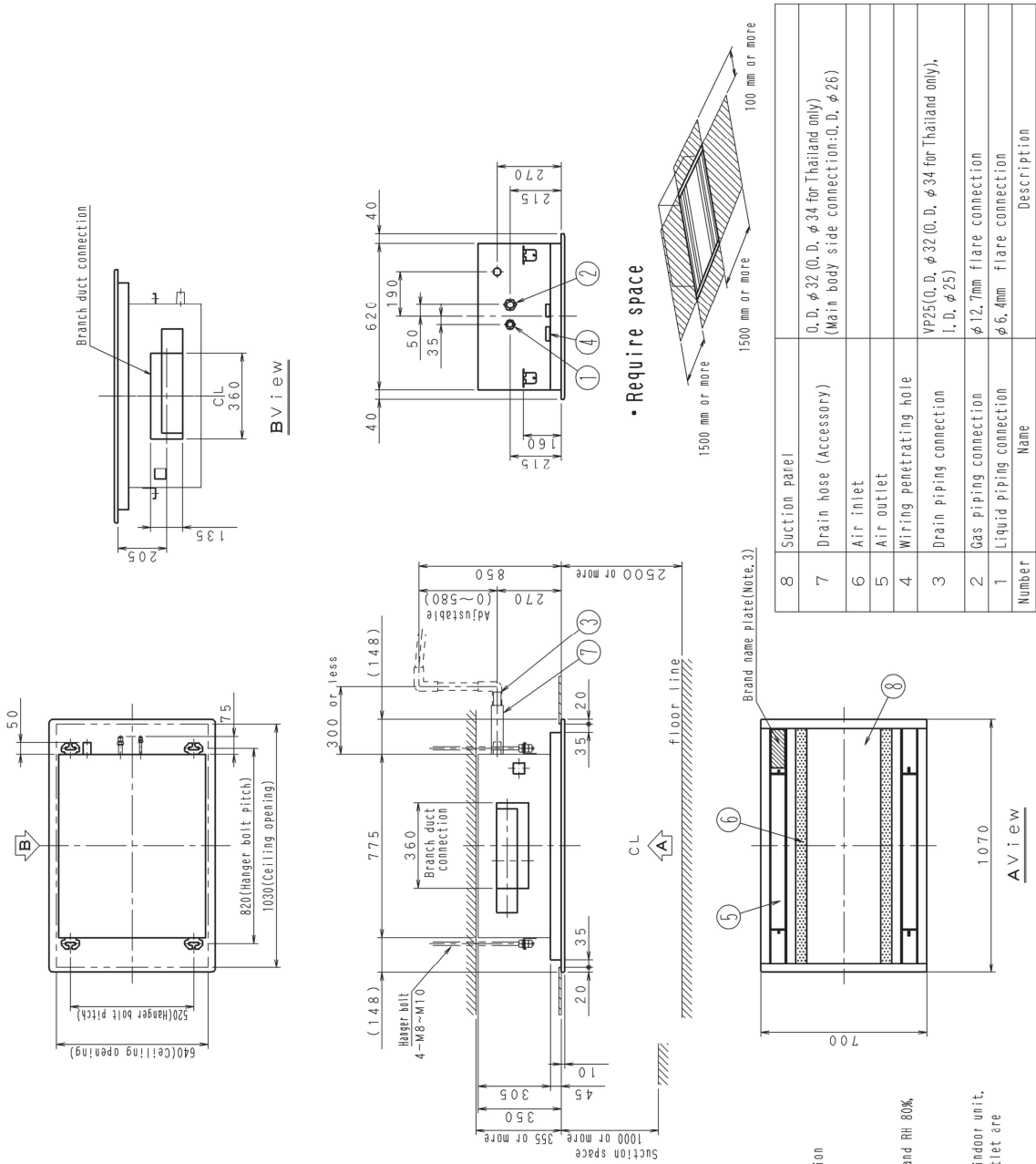


3. imensions

- FXCQ20AVM + BYBCQ40CF (Decoration panel)
- FXCQ25AVM + BYBCQ40CF (Decoration panel)
- FXCQ32AVM + BYBCQ40CF (Decoration panel)
- FXCQ40AVM + BYBCQ40CF (Decoration panel)

Unit: mm



- Notes:
1. Sticking location for manufacturer's label
 Manufacturer's label for indoor unit :
 Suction panel inner side's control box lid surface
 Manufacturer's label for decoration panel :
 Suction panel inner side's panel frame surface
 2. When installing an optional accessory, refer to the installation drawings.
 3. In case of using wireless remote controller, this position will be a signal receiver. Refer to the drawing of wireless remote controller in detail.
 4. When the temperature and humidity in the ceiling exceed 30°C and RH 80%, the additional insulation is required.
 Insulation : Thickness 10mm or more.
 Glass wool or polyethylene foam.
 5. Please do not place the thing been damp and trouble under an indoor unit. When the case where humidity is 80% or more, and the drain outlet are choked up and the air filter are dirty, dew may fall.

Number	Name	Description
8	Suction panel	
7	Drain hose (Accessory)	O. D. φ32 (O. D. φ 34 for Thailand only) (Main body side connection: O. D. φ 26)
6	Air inlet	
5	Air outlet	
4	Wiring penetrating hole	
3	Drain piping connection	VP25 (O. D. φ 32 (O. D. φ 34 for Thailand only), I. D. φ 25)
2	Gas piping connection	φ 12.7mm flare connection
1	Liquid piping connection	φ 6.4mm flare connection

3D117667